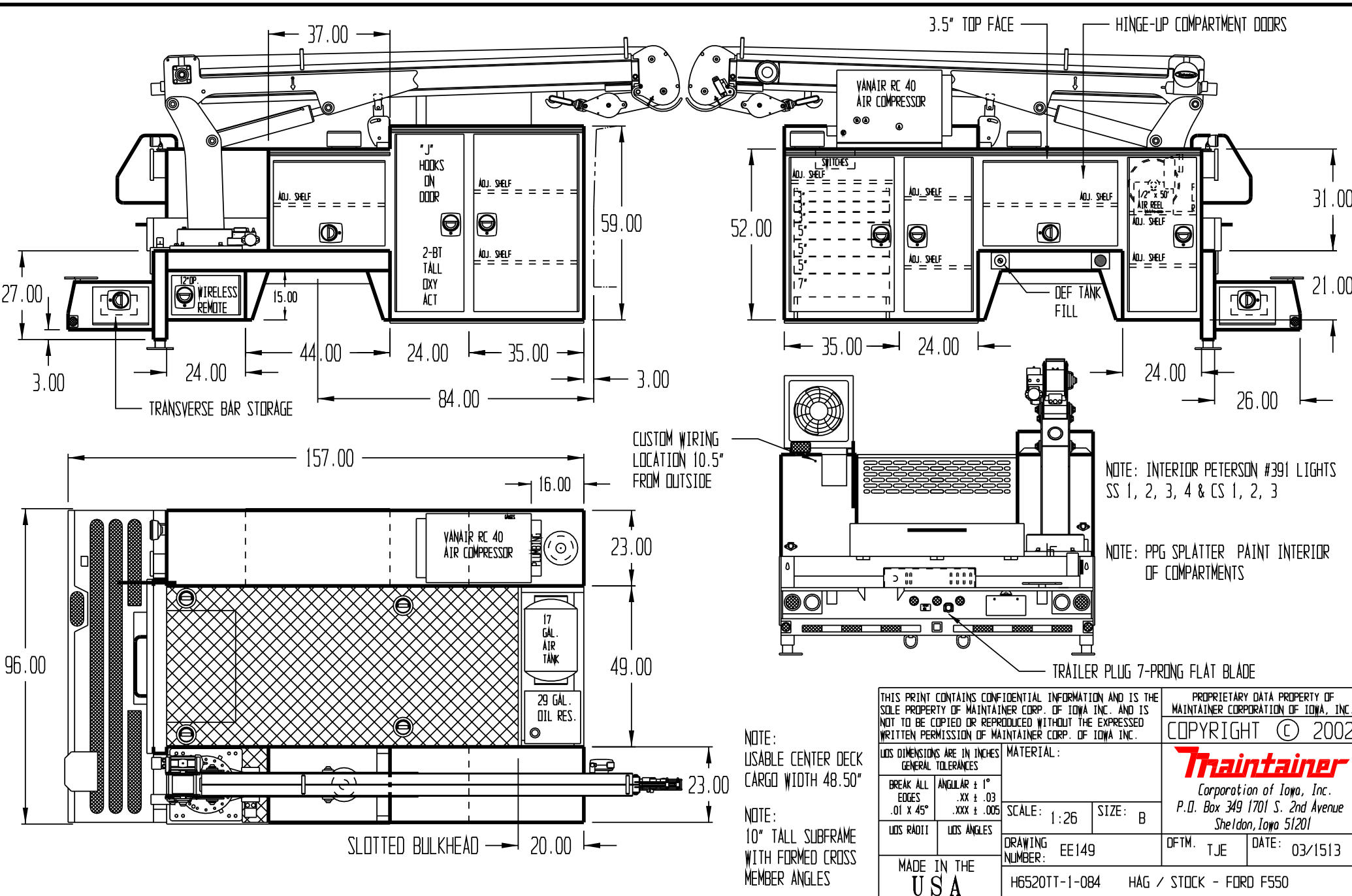


APPROVED BY _____

DATE _____

PAINT CODE _____

Z1 OXFORD WHITE




NOTE: INTERIOR PETERSON #391 LIGHTS SS 1, 2, 3, 4 & CS 1, 2, 3

NOTE: PPG SPLATTER PAINT INTERIOR OF COMPARTMENTS

NOTE: USABLE CENTER DECK CARGO WIDTH 48.50"

NOTE: 10" TALL SUBFRAME WITH FORMED CROSS MEMBER ANGLES

THIS PRINT CONTAINS CONFIDENTIAL INFORMATION AND IS THE SOLE PROPERTY OF MAINTAINER CORP. OF IOWA INC. AND IS NOT TO BE COPIED OR REPRODUCED WITHOUT THE EXPRESSED WRITTEN PERMISSION OF MAINTAINER CORP. OF IOWA INC.				PROPRIETARY DATA PROPERTY OF MAINTAINER CORPORATION OF IOWA, INC.	
LOD DIMENSIONS ARE IN INCHES GENERAL TOLERANCES				COPYRIGHT © 2002	
BREAK ALL EDGES .01 X 45°		ANGULAR ± 1° .XX ± .03 .XXX ± .005			
LOD RADII		LOD ANGLES		MATERIAL: SCALE: 1:26 SIZE: B DRAWING NUMBER: EE149 DFTM. TJE DATE: 03/1513	
MADE IN THE USA				H6520TT-1-084 HAG / STOCK - FORD F550	